

Cimagraphi 10

Artistic Cad/Cam

Cimagraphi Version 10.



- Full windows 10 compatibility
- Language and localization management updated
- Auto-update



Windows 10

Cimagraphi



Cimagraphi, is a 3D artistic CAD/CAM that opens new worlds of opportunities for artistic and industrial designers. The mainstay of GraphiTech's products, Cimagraphi provides creative freedom and milling capabilities to ensure the production of detailed and intricate designs. Applying CAD\CAM principles to freehand designs, Cimagraphi's unique artistic solution automates the design and milling of the most refined and detailed designs, and can be used for a wide range of applications. Cimagraphi is ideal for mold makers, jewelers, engravers, sign-makers, woodworkers and others who wish to integrate Artistic CAD/CAM into their traditional methods of work. The package combines design tools with 2.5D, 3D and 5 axis milling as well as a wide variety of outputs to CNC machines, engravers and routers.

Artistic CAD/CAM

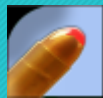
Artistic CAD/CAM describes those CAD/CAM applications specifically developed for the design and production of complex artistic designs. Ornamentation, shapes and patterns that can be drawn freestyle, can now be captured offering Artistic CAD/CAM, designers the freedom to create objects with a 'hand crafted' quality, emulating work usually done by individual craftspeople. Used in a wide variety of applications from fashion items to industrial molds, Cimagraphi provides the freedom and flexibility required by modern workshops while ensuring the accuracy, efficiency and savings found only in a computerized system.



Cimagraphi modular workflow



2D Design



- *Trace - Image to Vector Converting & editing*



- *GraphiCad - Drawing, Drafting & text layout*

3D Design



- *Picture To Part - Sculpting 3D model*

Manufacturing



- *Mill 2.5,3,4,5Axis - Prepare the job for milling*

Packages



- *Industrial*

- The perfect tool for industrial engraving
- Engrave on 2D or 3D surface
- Includes : Trace, GraphiCad & Mill 3X

- *3D Printing*

- Sculpt complex 3D models for printing
- Output STL files
- Includes : Trace, GraphiCad & Picture To Part



- *Artistic*

- The ultimate package for artistic design & manufacturing
- Includes : Trace, GraphiCad, Picture To Part & Mill 3X

Trace

Image to Vector Converting & editing...



Trace

Image to Vector Converting & editing...

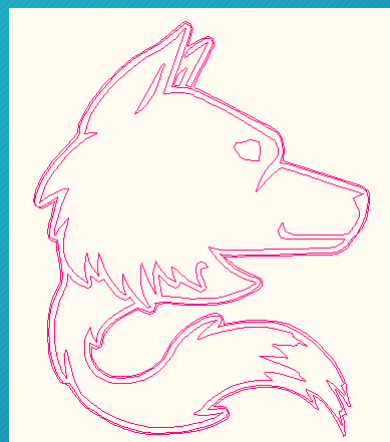
Trace automatically converts scanned images into machine ready vector images. Tracing is controlled by a set of easy-to-use parameters, generating outlines and centerlines with special tools provided for the optimization of color tracing and separation. It is possible to move contours, re-shape sharp corners or tangent points, filter lines, curves or short chains and reduce the amount of points. Users can also sketch (freehand) the desired contours, overlay the image and define zones of interest for future use. The layout can be organized into multiple layers for ease and flexibility and the graphic design can be exported.



Trace

Key Features

- Outline tracing
- Center line tracing
- Freehand vector editing
- Freehand sketching & drawing
- Changing curve types
- Chain breaking
- Sharpen corners
- Soften corners
- Line filter
- Curve filter
- Active areas
- Point reduction
- Data verification
- Measuring



GraphiCad

Drawing, Drafting & text layout within one environment...



GraphiCad

Drawing, Drafting & text layout within one environment...

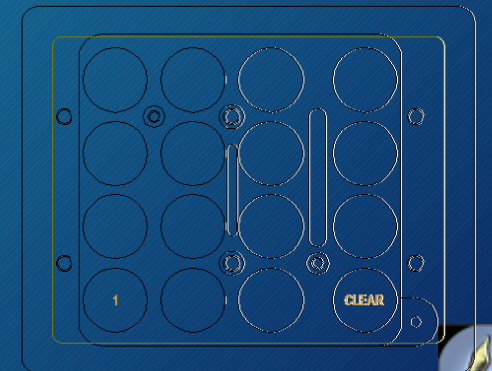
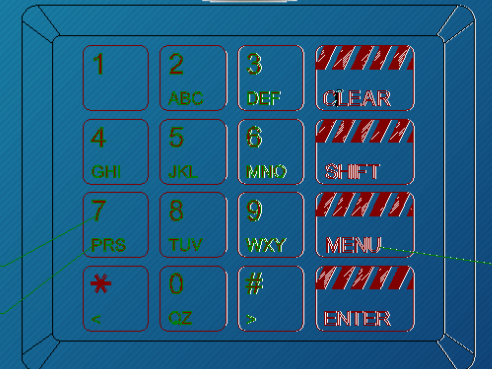
Whether drawing, drafting or adding text, users can now create and edit 2D designs and use quick and easy sketching functions to draw or digitize simply by using a mouse. Handling text is effortless with TrueType fonts and more than 170 fonts provided by GraphiTech. Powerful typesetting capabilities allow users to set font size, alignment, positioning, rotation angles, directions, etc. Engravers can make serial number plates or create rulers and dials using an advanced wizard. A powerful font editor allows users to create their own fonts and save them for future use.



GraphiCad

Key Features

- Create & alter: Lines, Arcs, Circles and Text.
- Create frames such as: Rectangle, Obround, Ellipse, and Exact Polygon.
- Multiple trim functions **UPDATE!**
- Blend entities
- Chamfer entities
- Standard hole library
- Search machine for double entities and disconnections
- Marking options : All in window, Part in window, Chain
- Easy positioning anchor.
- Full text attribute control including: Height, Aspect ratio, Slant, Rotation, Line spacing, Writing direction, Kern control, Letter spacing, Word spacing and Font.
- Text alignment
- Automatic text generation for serial numbers and repetitive signs. **UPDATE!**
- Automatic Dial and Ruler generator
- Text on curve
- Text on arc or ellipse



GraphiCad

Key Features

- Worldwide language support.
- Character map
- Font editor **UPDATE!**
- True Type support
- Layer management
- Combine layers : Weld, subtract, union
- Move and copy
- Rotate
- Scale
- Mirror
- Stretch
- Create parallel
- Single line to closed contour
- Shadows
- Freehand sketching
- Data verification
- Measuring



Picture To Part

Sculpting 3D models...



Picture To Part

Sculpting 3D models...

This surface-sculpting tool enables users to sculpt and mold 3D surfaces and imitate hand-crafted work. 2D geometry, digitized data or raster images can easily be converted into models using Cimagraphi's variety of tools. Reverse engineering capabilities allows users to create surfaces using cloud of points generated by a 3D scanner. Freehand sculpting tools enable the design of new parts or the correction of imperfections in scanned parts.



Picture To Part

Key Features

- Emboss 2D vectors to 3D Relief
- Ruled surface generator
- Shade analysis with image enhancement tools
- Texture and Pattern embossing
- Surface smoothing
- Active areas
- Cloud of point Reverse engineering.
- Script manager for full control and re-run of process.
- Grouping and Group control
- Material library
- Photo realistic rendering with OpenGL
- Transformations such as : Move, Scale, Rotate, Mirror, Stretch



Picture To Part

Key Features

- Noise reduction and surface equalizing
- Surface Offset
- Section viewer
- Freehand sculpturing
- Data verification
- Measuring
- Multiple zoom options
- Panning
- Manual and pre-defined 3D viewing options



Mill

Prepare the job for milling...



Mill

Prepare the job for milling...

A toolpath (NC data) is easily generated using Cimagraphi's automated tools. Milling Expert guides users through the toolpath generation process, prompting selection from a library of stock materials, tools and pre-defined strategies. Cimagraphi automatically exports the final toolpath to the machine controller through a wide range of postprocessors. Strategies supported by Cimagraphi include clean areas, contours, on-line slots, drill cycles and automatic detection of non-machined areas for surface roughing and finishing 2.5, 3, 4 and 5-axis milling.

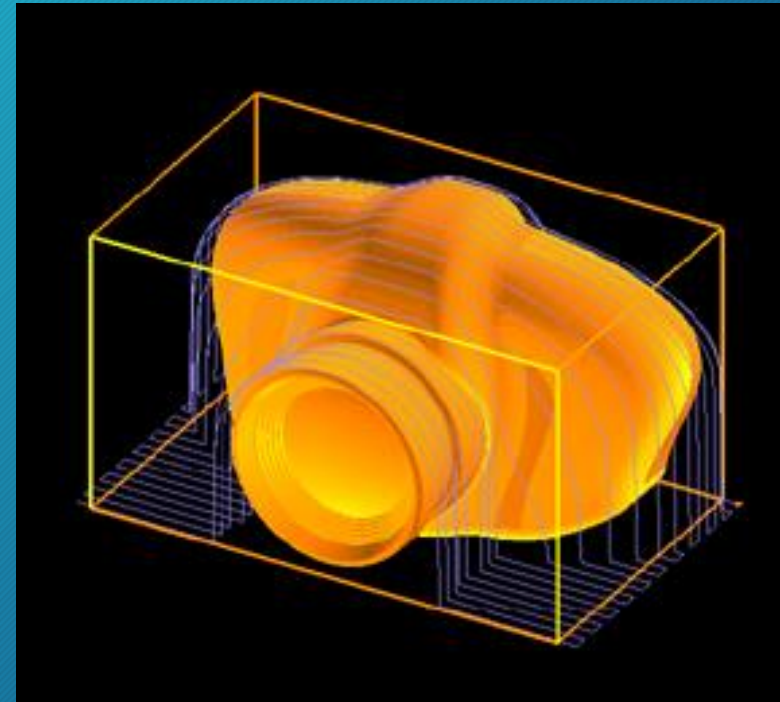


Mill

Key Features

UPDATE!

- Machining strategies include : Slotting, Profile, 3D Ramping, Hatching, Spiral Area clean, Radial Area clear (True spiral), Face milling and Full Drill cycle control
- Full control over machining process such as: feed of cut, Spindle speed, Coolant, Depth of cut and down step
- Tool compensation
- Full Gouge checking
- Rough & finish cutting.
- 4th and 5 Axis milling
- Climb & Normal cutter direction control
- Multiple modes of entry into the material
- Un-Machined area detection
- Smart clear for large side step.
- Over 80 different Machine Post Processors.
- Powerful Post Processor language for user defined posts
- User defined machine Zero
- Data verification and Measuring
- Multiple zoom options

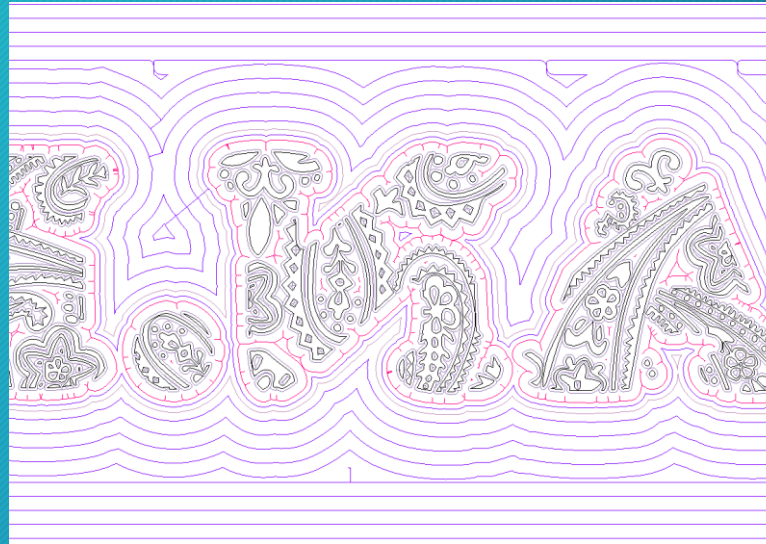


Mill

Key Features

UPDATE!

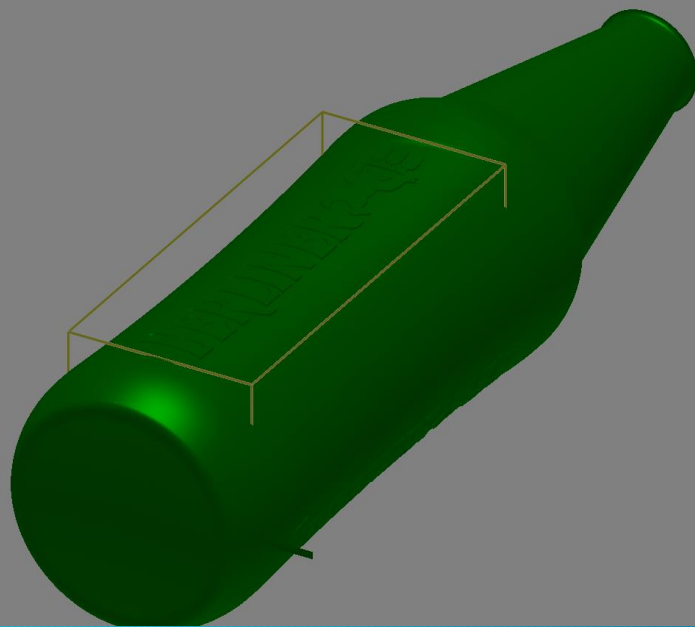
- Script manager for full control and re-run of process.
- Grouping and Group control
- Material library
- Photo realistic rendering of cutter paths with OpenGL
- Visually define tools for the Tool Library.
- User defined Stock.
- Move, Scale, Rotate, Mirror
- Cutter entry point control
- Job management & information
- Technology table
- Multiple indexes
- Surface creation: Spherical, Cylindrical, Conical, Mathematics, Ruled, Drive, Revolve.
- Project or Wrap on surface
- Import P2P surfaces
- Cimatron Direct interface
- Panning
- Manual and pre-defined 3D viewing options



Simulation



- Improved lighting for realistic viewing



Data interface

- 3D Printing formats

UPDATE! • STL

- CAD Data interface

- IGES/STEP

NEW! • DWG,

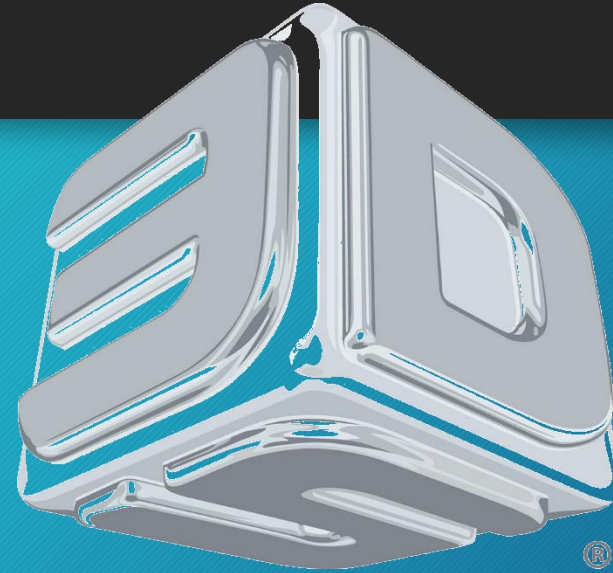
UPDATE! • DXF,

- HPGL, NC

UPDATE! • 3DM Open Nurbs

UPDATE! • PDF, PostScript (PS), AI - enhanced

- All raster formats (JPEG, BMP, etc...)



Adobe PostScript



Cimagraphi Applications

Cimagraphi appeals to a wide range of markets, many of which produce traditionally hand-crafted objects. These include artistic metalworking, woodworking, ornamentation, jewelry and sculpting as well as mold and die making. GraphiTech are leading developers of artistic CAD/CAM solutions crafted for the manufacture and reproduction of detailed artistic and industrial designs. Our products constitute a new world of opportunities for industrial designers and manufacturers in engraving, sign-making and milling that reduce costs and time to market. GraphiTech products include artistic CAD\CAM, 2.5 / 3 axis milling and reverse engineering solutions. Marketed throughout Europe, Asia and the Americas, GraphiTech's clients are provided with full training and customer support.

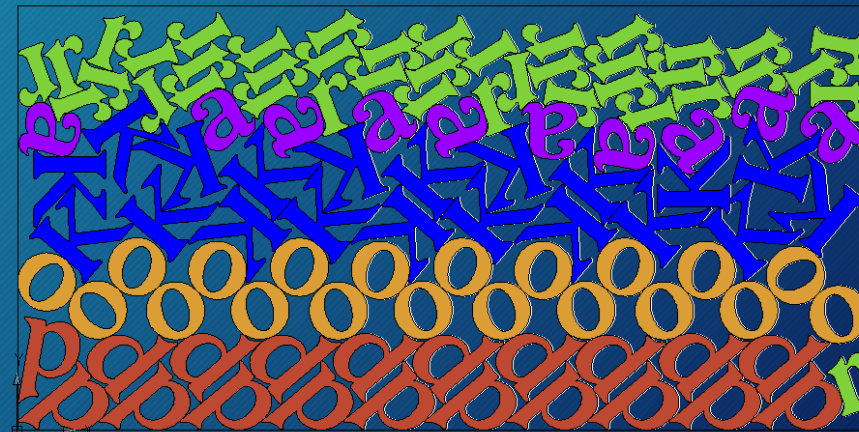
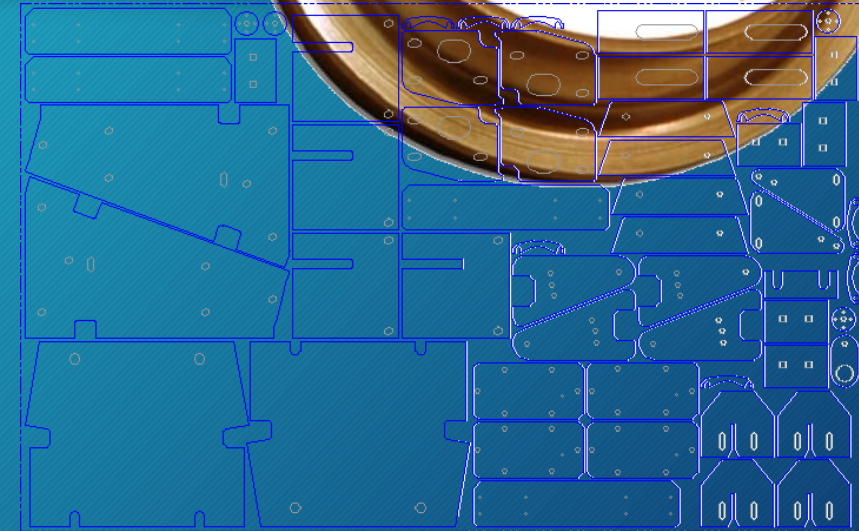


Nesting



Automatic nesting for optimizing material utilization while fitting two-dimensional shapes on a larger sheet.

- Provides highly optimized and compact layout, thus reduces raw material consumption
- Reuse of waste material
- Achieves entire nesting in just a few seconds
- Contributes in completely automating the production line



GraphiTech Ltd.

www.graphitech.net

P.O.Box 359, Shefayim, Israel 6099000

Tel: +972-3-903.6850, +972-9-771.2153

Fax: +972-9-768.9896

Email: info@graphitech.net

Support : support@graphitech.net